

London's first annual art
exhibition on the River Thames

September 26th to 19th October 2008

DRIFT 08

Where in London can you find...

- A ghost bridge that emerges after dark...
- Mythical creatures that lurk beneath the water...
- A capsizing yacht that won't stop sailing?
- **DRIFT – a ground-breaking art exhibition on the Thames.**



SUMMARY

Illuminate Productions is creating the first major river-based contemporary art exhibition in London. Bringing together a wide range of high-profile international artists, galleries, collectors, and art enthusiasts, DRIFT 08 will provide an exciting and inspiring spectacle at the cutting edge of contemporary art.

Art for London

DRIFT 08 is a series of strategically-placed artworks in and alongside the River Thames in the heart of central London. It will transform and enrich a vast section of the river from Blackfriars Bridge to Tower Bridge. Its prime public location means the artwork will be accessible to all parts of the community and the millions of visitors to the area.

Art for the Public

A unique and original series of artworks will be showcased. High-profile international artists will exhibit alongside emerging talent.

The artists' selection process has included an international open submission opportunity for an emerging artist.

Art for the World

Each site-specific, commissioned piece will demonstrate the highest level of technical excellence and innovation in its field, involving technicians, engineers, architects and designers.



PRESS INFORMATION

Exhibition Dates: 26th September to 19th October 2008

Press Launch: 25th September 2008

Embargo: For immediate release

Free public boat tours for duration of DRIFT 08

For further information, please contact:

Una Devine,
Media Advisor, Illuminate Productions

Telephone: 07533 531 968
media@drift.org.uk

Caroline Jones,
Founder and Creative Director,
Illuminate Productions

Telephone: 020 7357 9003 / 07886 127 535
Illuminate Productions,
Floor 2, 26 Marshalsea Rd,
London SE1 1HF
media@drift.org.uk
caroline@illuminateproductions.co.uk
www.illuminateproductions.co.uk

Sponsors

DRIFT 08 is supported by Old Mutual, The Corporation of London, Southwark Council, Outokumpu and Sir Robert McAlpine.

Illuminate Productions presents DRIFT 08, London's first annual art exhibition on the River Thames.

This unique and groundbreaking contemporary art show will see seven installations being placed in the river and along its banks and bridges between Blackfriars Bridge and Tower Bridge.

The installations include the recreation of the old Blackfriars Railway Bridge through laser light, mythical creatures swimming in the river at twilight, and the sounds of a phantom beach echoing around the Millennium Bridge.

A yacht caught for posterity in the sinking position will also be featured and installed for the exhibition's duration at Canary Wharf. Audiences will have the chance to become part of a painting at an installation in the middle of the river across from the Tate Modern.

People walking along the river banks will come across an installation reminiscent of The Day of the Triffids, where fantastical plant life will appear to be invading and colonising the river buoys.

Major international and emerging artists are taking part, these include Julien Berthier (France), Keith Bowler (UK), Margaret Evangeline (USA), Andy Harper (UK), Mariele Neudecker (Germany), Craig Walsh (Australia) and Elizabeth Russell (Canada).

The DRIFT exhibition takes art out of the galleries into the public domain where it can be enjoyed by everyone.

A series of free public boat tours will be run in conjunction with the exhibition where people will be brought along the route of the show to enjoy the installations close up.

An educational programme will also be run in conjunction with the exhibition.



Media Boat Tours

If you are a member of the media and wish to book a boat tour for the press preview on the 25th September, please contact Caroline Jones on 0207 3579003 / 07886 127 535, or email media@drift.org.uk before 22nd September 08

Proposed DRIFT 08 installation sites



DRIFT 08

Illuminating the Thames

Illuminate Productions will curate and manage an annual group art event on the River Thames from 2008 to 2012. A series of large-scale, commissioned artworks will create a continuous trail of discovery for audiences on the river and along its walkways.

The DRIFT shows will feature a broad range of British and international artists working in installation, painting, sound and film.

The DRIFT 08 exhibition will be in the unique location of the River Thames from Blackfriars Bridge to Tower Bridge. This is the first time a contemporary art event of this scale has been staged on the river.

Subsequent DRIFT shows will evolve annually in scale and influence along the river up to the site of the London 2012 Olympic Games.

The artworks will be situated in the river and on its walkways, bridges and buildings. Artists will make site-specific

work around the central theme of DRIFT.

Working with light, movement, energy, and the natural elements on the ever-changing river, each artist will have a different location to transform and enrich.

Each site has been chosen for its unique range of possibilities for the artist and the viewer, so that both can have an unfolding journey of discovery.

DRIFT will bring enormous cultural benefits to London, and will cement the capital's and the UK's reputation as a leading centre for contemporary art.

DRIFT will entertain, enhance, engage and illuminate.

About Illuminate Productions

Illuminate Productions is a not-for-profit organisation that brings contemporary art out of the galleries and into the public domain for enjoyment by everyone. It challenges major

international and emerging artists to work in groundbreaking contexts within publicly accessible environments.

Educational programmes run alongside exhibitions to provide the public with a unique opportunity to become involved in exploring contemporary art and culture and creating their own artworks. The programmes are designed to appeal to a diverse range of people – from children and teenagers to parents and pensioners.

Illuminate Productions is a leading force in UK and international contemporary art. It has staged and managed several acclaimed public exhibitions and events. These events are mainly staged in forgotten derelict sites which are regenerated and brought back to public attention. Major shows staged in recent years include THE VISITORS (2007), EXIT (2007), CORE (2006), and FLUX (2005).

For more information, visit
www.illuminateproductions.co.uk

ARTISTS

Illuminate Productions helps artists push the boundaries of artistic practice by challenging them to work in unique and ground-breaking contexts.

Artists are carefully selected for their relation to the exhibition's subject matter, their ongoing commitment to innovative art practice, their willingness to expand the possibilities of their work within a supportive framework, and their ability to adapt to a unique environment. They are also chosen for their ability to make work that is conceptual, aesthetic, thought-provoking, and of a high quality. Each

artist was asked to make site-specific work and to submit a detailed design proposal for licensing applications.

The benefits for the artists include the challenge of making site-specific work for a unique public space, which breaks through boundaries in their work and helps them broaden their art goals.

It also gives them the opportunity to make commissioned, non-commercial pieces by operating alongside artists with similar interests and varied international approaches to artistic practice.

Exhibiting Artists

Julien Berthier
(Canary Wharf)

Keith Bowler
(Old Blackfriars Railway Bridge)

Margaret Evangeline
(Opposite Tate Modern)

Andy Harper
(Fishmongers Walk)

Mariele Neudecker
(Millennium Bridge)

Craig Walsh
(London Bridge)

Elizabeth Russell
(To be confirmed)

“ I wish there were more opportunities like this in the art world ”

Julius Popp – Exhibiting artist at CORE and FLUX exhibitions

DRIFT 08

EXHIBITING ARTISTS

DRIFT 08 will feature a diverse group of seven contemporary artists. Painters, sculptors, multimedia and installation artists will each make site-specific work for the River Thames. High-profile international artists will show alongside emerging talent. Many of the artists have work in major collections and galleries worldwide.

Mariele Neudecker



Internationally-renowned for her atmospheric installations, German-born Mariele has lived and worked in the UK since 1985. She has exhibited extensively worldwide, including shows at Tate Britain and Tate St. Ives. A multiple award-winner, her work is included in many private collections, such as the Saatchi and the Arts Council England.

Julien Berthier



Julien Berthier's projects mark him out as one of France's most exciting, young, multimedia artists. He has shown in museums and galleries across Europe such as Centre Pasqu'Art, Bienne, Switzerland, Le Grand Palais, Paris, France, Museum Bochum, Bochum, Germany, and Art Basel 06. Julien Berthier lives and works in Paris.

Margaret Evangeline



New York-based Margaret Evangeline has won numerous international awards. Solo exhibitions of her work have been held at various venues worldwide, such as The Palm Beach ICA, The Delaware Center for the Arts, The Hafnarborg Art Museum outside Reykjavik, Iceland, and the Taipei Museum in Taiwan.

Craig Walsh



Multimedia artist Craig Walsh has exhibited in many public galleries, spaces and festivals worldwide including Livid, Womad, and Tollwood (Germany). He has also created a major projection work for The Arts House at The Old Parliament House in Singapore. His prizes include the National Sculpture Prize at the National Gallery of Australia.

Keith Bowler



Emerging light installation artist, Keith Bowler's large-scale works include 'Flicker Fixer' on the Regents Canal, London, 'Zwanzig Ellen' in Wuppertal, Germany, and work at the Watermans Art Centre, Brentford, London. Keith Bowler lives and works in London.

Andy Harper



Painter Andy Harper has exhibited at galleries such as The Lemon Sky Projects, Miami, K3 Gallery, Zurich, and The Museum of Garden History, London. He has been included in many art prizes such as The Royal Academy Summer Show, London, and John Moores 24, Walker Art Gallery, Liverpool. Andy Harper lives and works in London.

Elizabeth Russell



Open submission winner, Elizabeth Russell, is a multimedia artist. Her site-specific installations in the UK and Canada include The Brewery Show, Vancouver, Cop Shop, Camberwell Police Station, London, and Artropolis, CBC Building, Vancouver. Elizabeth is featured in private collections and is an advisor to many public art spaces in Canada.



© Copyright the artist and Illuminate Productions

“the old
Blackfriars Railway
Bridge will be
recreated in light”

Keith Bowler

Title

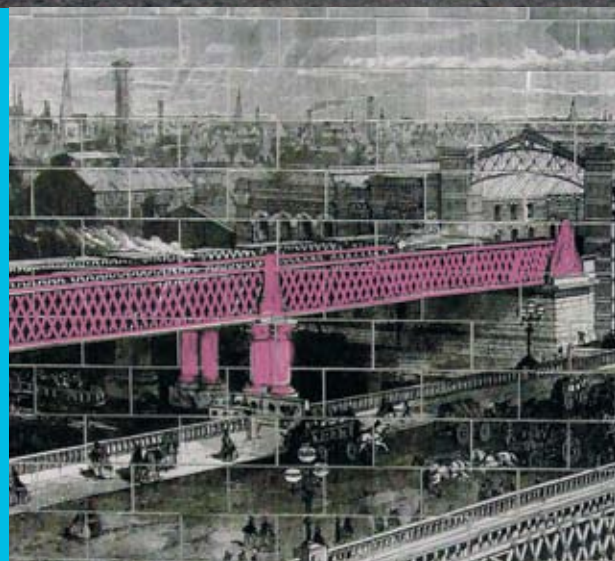
Ghost Bridge

Medium

Light installation

Location

The Old Blackfriars Railway Bridge



The old Blackfriars Railway Bridge will be recreated in light. The bridge design will be simulated on top of its original supporting posts using the latest lighting technology. This prominent spectacle will have a ghostly presence as it emerges slowly as night falls across the river. *Ghost Bridge* will signal the start of the exhibition trail.

Supported by



OLD MUTUAL

ASSET MANAGEMENT • ASSURANCE • SAVINGS



© Copyright: The artist and Illuminate Productions. Courtesy Stux Gallery, New York



Margaret Evangeline (USA)

Title

Saved from Drowning

Medium

Steel painting

Location

Opposite TATE modern

“ the
audience will
become part
of the painting ”

A large-scale interactive painting, bearing witness to those who have drowned in the waters, will rise and fall with the river's tidal flow. The mirrored surface will reflect a distorted view of the river's movements whilst capturing the audience's image within the painting. People will also be invited to throw flowers onto this constantly changing work to commemorate those who have died in the Thames.



© Copyright: The artist and Illuminate Productions.. Courtesy Barbara Thumm gallery, Berlin

Mariele Neudecker (Germany)

Title

Much was decided before
you were born (2)

Medium

Sound installation

Location

Millennium Bridge



People crossing the Millennium Bridge will inexplicably recall seaside experiences and holidays. Mariele's sound installation will disorientate passers-by, surrounding them with the sound of waves, seaside chatter, the cries of seagulls, and the eerie knocking of rigging against masts.

“ sounds of the
seaside will echo
all around ”

Supported by



OLD MUTUAL

ASSET MANAGEMENT • ASSURANCE • SAVINGS

Craig Walsh (Australia)

Title

Classification Pending

Medium

Hyper-real projection

Location

London Bridge

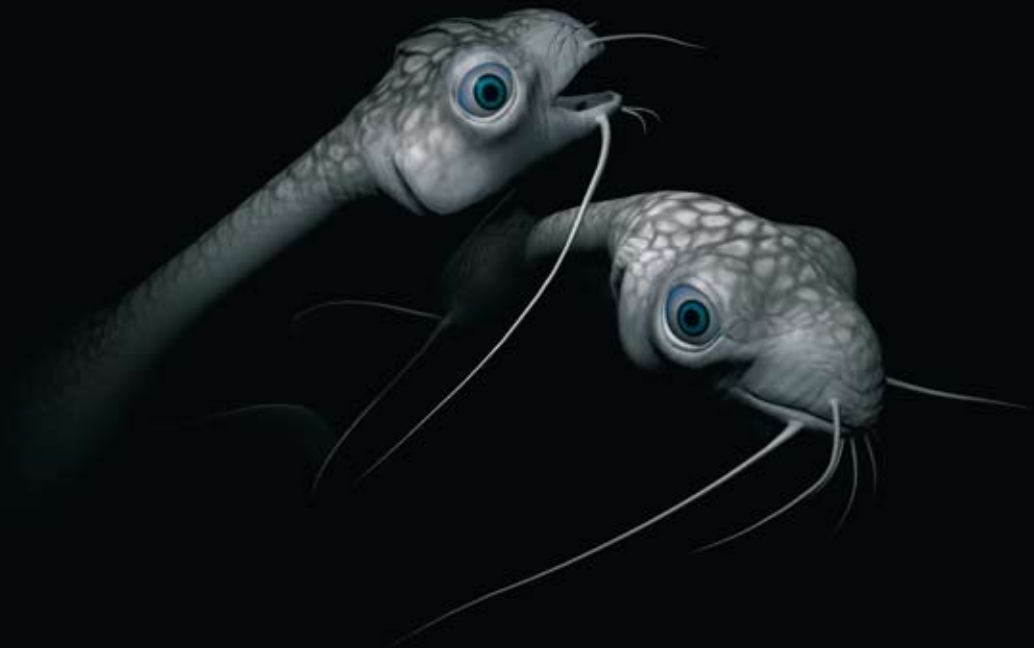
Witness a new life form living in the Thames. These mythical creatures will evolve to form a family unit during the course of DRIFT. Only appearing at dusk, they will develop into an apparition – like the creatures of folklore before them.

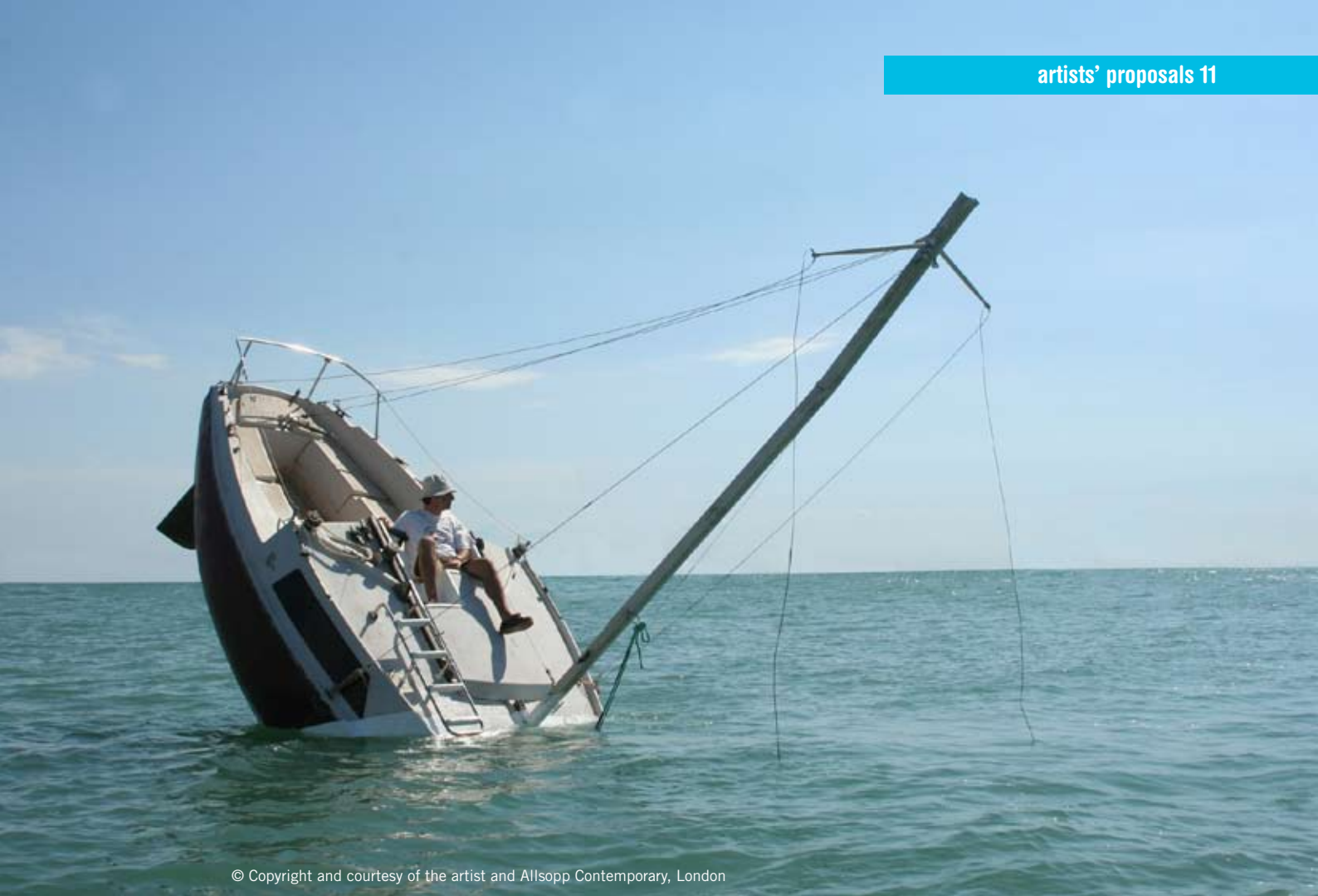
“ mythical creatures will appear in the river at dusk ”

Supported by



© Copyright: The artist and Illuminate Productions





© Copyright and courtesy of the artist and Allsopp Contemporary, London

“ the capsizing
yacht that just
won't stop
sailing ”

Julien Berthier (France)

Title
Love-Love

Medium
Sculpture

Location
Canary Wharf

More than just a labour of love, Love-Love is the name of this renovated and motorised sailboat which the artist has saved from the waves. The vessel is captured in its permanent sinking position, even whilst sailing. The unique spectacle of this fabulously eccentric work moving around Canary Wharf will be an unforgettable experience for anyone who sees it.



Copyright: The artist and Illuminate Productions. Andy Harper detail taken from 'The Visitors' 2007, courtesy of the artist and Illuminate Productions



Andy Harper (UK)

Title
Feast of Skulls

Medium
Oil on steel

Location
Fishmongers Wharf

Weird and wonderful plant-like forms will be painted directly onto a river buoy at a location on the Thames walkway. The unearthly lush plant forms will appear to be growing, morphing and climbing the buoy.

“fantastical foliage will invade and colonise the river buoys”



Elizabeth Russell (Canada)

Title

Migration (working title)

Medium

Painting installation

Location

To be confirmed

Two site-specific mixed media works will celebrate the history of the Thames and its role in London life down through the ages. An abstract image and text will be painted on a large mainsail and sailed along the river. The second piece will continue the migration theme and will feature a chalk drawing and text on brick walls under one of the Thames' bridges.

“a sailing canvas of glorious colour will move along the Thames”

Special note on open submission

Illuminate Productions held an international open submission competition – a pioneering opportunity for emerging artists to show work during DRIFT.

Elizabeth Russell's submission was one of the winners selected by our judges. Illuminate Productions aims to showcase the submissions of the other winners – Mark Haywood (UK), Thomas Nicolai (Germany) and Mark Maxwell (USA) – at later DRIFT shows, subject to adequate funding being raised.

DRIFT 08

PEOPLE

Key Staff

Caroline Jones

Co-founder, curator and creative director. A graduate of Chelsea Art College (1997) with a Master of Fine Art (Painting), Caroline has extensive experience in creative thinking, artist development, lecturing, workshop leading, and art advisory roles.

Tessa McArthur

Co-founder, operations manager and director. Since graduating in media technology, Tessa has worked in project development roles with many television companies and as a project manager on large-scale national and international public events.

Freelancers & Volunteers

Each Illuminate Productions project consists of a diverse group of professionals who assist on an ongoing freelance basis. We also have a dynamic and wide-ranging volunteers' programme involving corporate groups, individuals and the local community.

Advisory Committee

Nigel Kershaw

Nigel is Chief Executive of Big Issue Invest and Chairman of The Big Issue Co. Ltd. He is the founder of many award-winning social businesses and advisor to several others. He was honoured in 2008 as 'Good Director for Enterprise' by Director Magazine.

Edward Lucie-Smith

Internationally-acclaimed author, art critic and historian, Edward has published more than sixty art books, mostly on contemporary artwork. He is regarded as one of the world's most prolific and published writers on art with his books now being used as standard texts across the world.

David Cotterrell

David Cotterrell is an installation artist who has exhibited worldwide in gallery spaces, museums and the public realm. He is a CABE-appointed lead artist consultant to Rogers Stirk Harbour + Partners, and is a consultant on cultural and public policy for urban regeneration in the UK.

Theresa Roberts

Theresa Roberts is Co-Chair of the Development Council of the International Slavery Museum – part of National Museums Liverpool – and is one of the foremost collectors of Jamaican art in the UK.

Leigh Robb

Curator at the Thomas Dane Gallery, Leigh has worked at the Guggenheim, Venice, Italy and Queensland Art Gallery, Australia. Leigh is a respected art adviser to public and private collections.

Lord & Lady Burlington

William Burlington is a photographer. He recently founded Lismore Castle Arts – a contemporary art space in southern Ireland. Laura Burlington is a contributing fashion editor for Harpers Bazaar magazine and a creative consultant.

Henry Meyric-Hughes

Independent curator, consultant, art writer and president of the International Association of Art Critics since 2002, Henry's numerous international posts have included being Director of the Hayward Gallery, President of the International Foundation Manifesta, and Director of Visiting Artists for the British Council.

Mariele Neudecker

Mariele is an internationally-recognised artist who has exhibited extensively internationally, including solo shows at the Tate Britain and Tate St. Ives. She has won several awards and her work is included in many public and private collections, such as the Saatchi, the Arts Council and the Philip Morris.

Fiona Banner

Turner Prize-shortlisted Fiona is one of the UK's most highly regarded artists. Her work is represented in many major collections worldwide, including MOMA, New York, and The Tate Gallery, London. Fiona also runs the Vanity Press.

Una Devine

Una Devine is an award-winning journalist who has worked across radio, television, newspapers, magazines, and new media in London, Los Angeles and Dublin.



'Ring' Thomas Nicolai - CORE 2006

ILLUMINATE PRODUCTIONS - PREVIOUS EXHIBITIONS &

BACKGROUND

“excellent inspirational show – a surprise around every corner”

Visitor comment from CORE exhibition 2006

Founded in 2003 as an independent, not-for-profit, curatorial organisation by Caroline Jones and Tessa McArthur, Illuminate Productions presents contemporary artwork in unusual, yet accessible environments. This is done by opening 'lost' buildings and identifying areas of geographical or historical importance, including interesting public outdoor spaces. Illuminate Productions challenges established and emerging artists to work in groundbreaking contexts, so their work can be brought to community and international audiences. New artists are nurtured and inspired by showing alongside, and taking advice from, established art names.

FLUX (2005)

FLUX was held in the vaults under London Bridge Station. The venue was specially selected for its unique energy, atmosphere and immense size. FLUX featured the work of 12 artists, including David Medalla, Jeppe Hein, Julius Popp and Zebedee Jones. The exhibition centred around the theme of energy and movement.

CORE (2006)

CORE transformed the last remaining factory on London's South Bank. Union Works – a Grade Two listed building – was the site of Britain's last bearbaiting arena dating back to the 1680s. The building was cleared and sensitively restored for the exhibition. CORE featured the work of 13 artists including Anya Gallaccio, Michael Sailstorfer, Massimo Bartollini and David Cotterrell. CORE was centred around the theme of chemical and physical change.

EXIT (2007)

EXIT was the first solo show of British graffiti artist SheOne. SheOne marked the historic Union Works on the South Bank before its demolition, using bold strokes, emblems and personalised shorthand – a style that has won him worldwide acclaim. The building was demolished when the exhibition ended, with the work still intact.

The Visitors (2007)

A modernist formal space was transformed for a solo show by Andy Harper. The Visitors featured a large-scale, site-specific painting of an organic alien landscape. A collaboration between Harper and musicians James McArthur and Terence McGaughey created a haunting and unique soundscape to accompany the show. The inspiration for the exhibition was taken from the 1961 science fiction novel Solaris by Stanislaw Lem.

ILLUMINATE PRODUCTIONS
is a not-for-profit organisation that
presents contemporary artwork in
unusual, yet accessible environments.
This is done by opening 'lost' buildings
and identifying areas of geographical
or historical importance, including
interesting public outdoor spaces.
Illuminate Productions challenges
established and emerging artists to work
in ground-breaking contexts, so their
work can be brought to community and
international audiences.

DRIFT 08

TRANSFORMING THE THAMES

Current support includes:

